



Planting for a Rainy Day



THE UNIVERSITY OF ARIZONA
Cooperative Extension

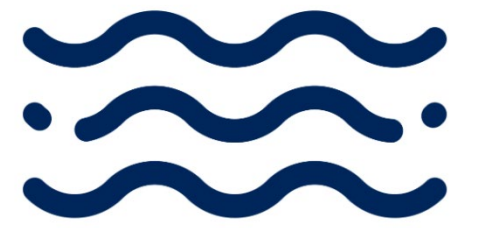
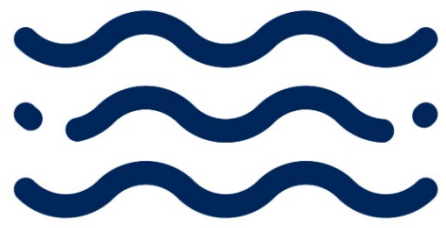
2025-2026



ARIZONA

project WET

WATER EDUCATION TODAY



Lesson 2: Part B

Smart Landscapes

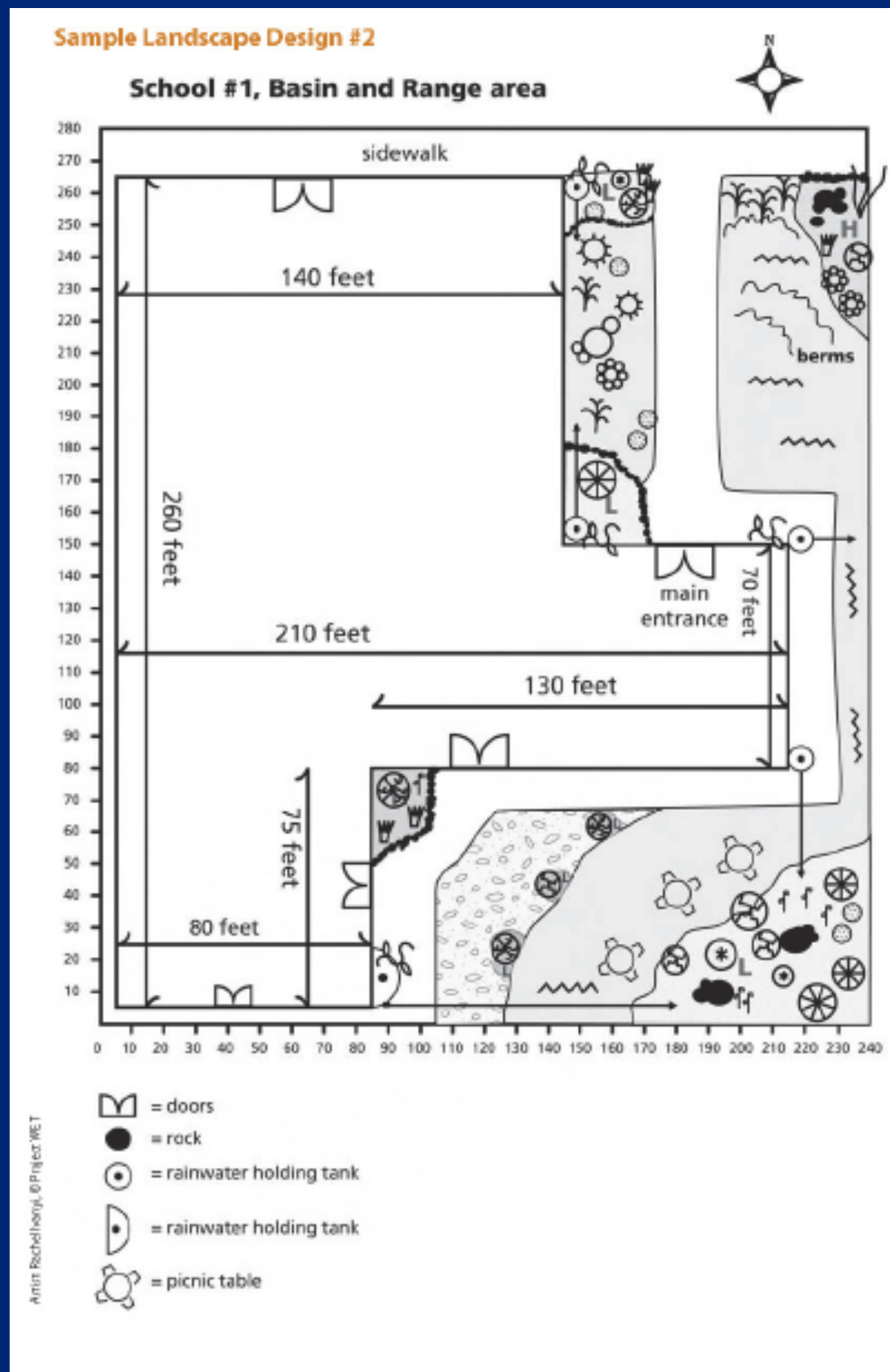
Investigative Questions

- How can you harvest rainwater to transform an impermeable plot of land on your school grounds into a water-efficient oasis?

Smart Landscape Design: Lesson 2 Part B

Lesson 2: Part B - Activities:

- Have students work in groups to complete the rainwater harvesting calculations page
- Go over rubric again and review sample landscape designs 1 & 2
- Hand out Steps for Designing Your Water Efficient Landscape

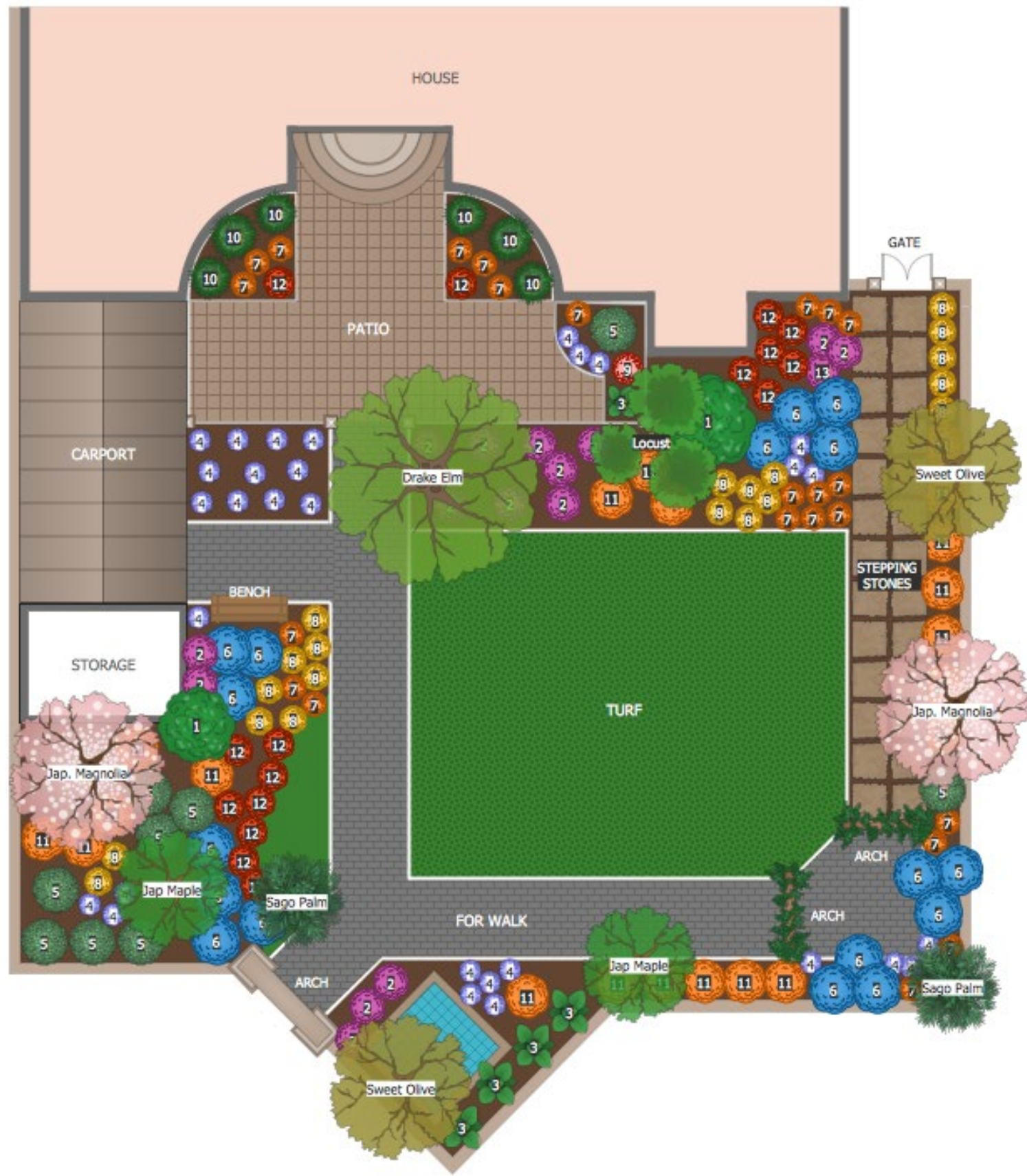


Steps for Designing Your Water Efficient Landscape

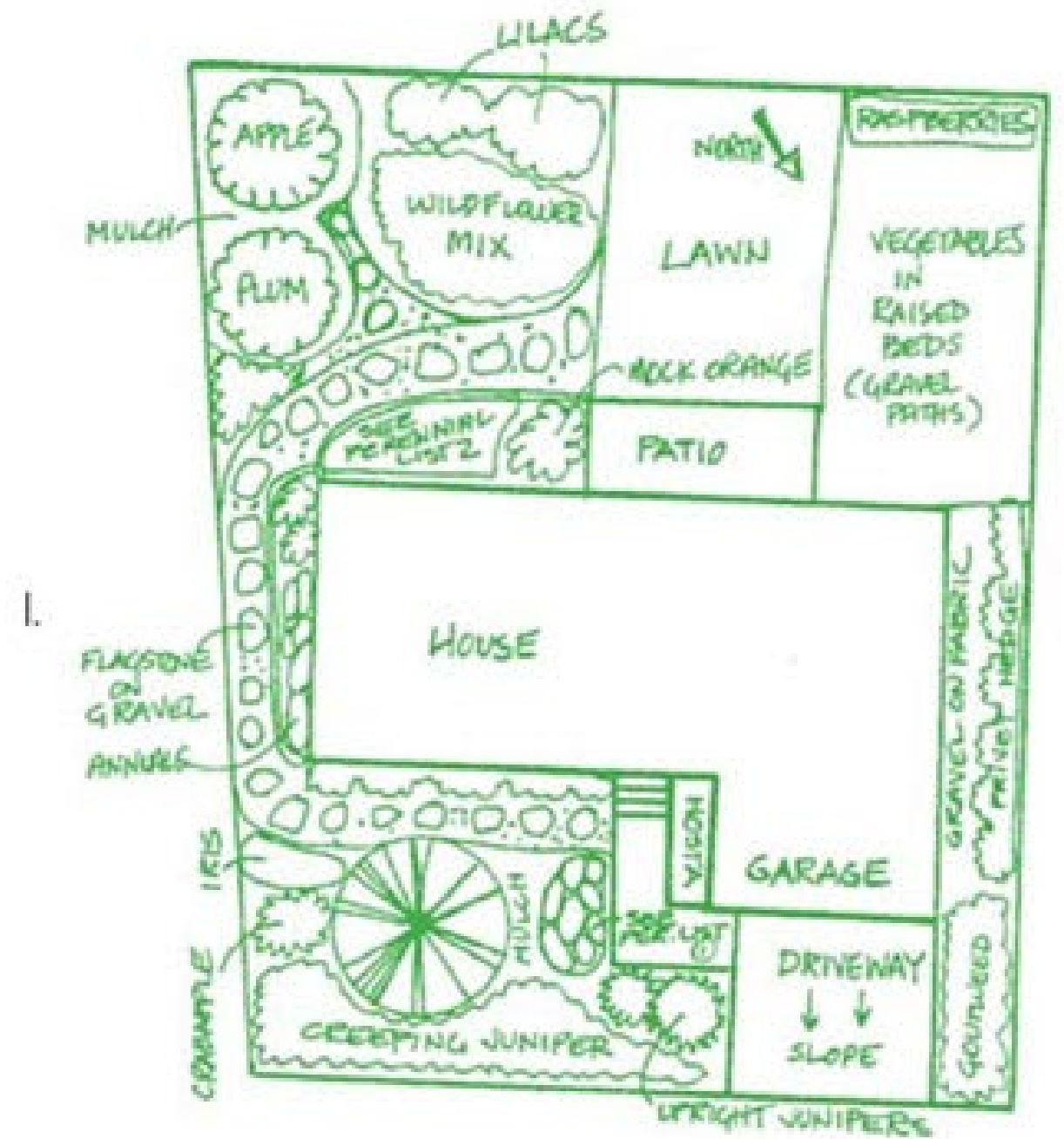
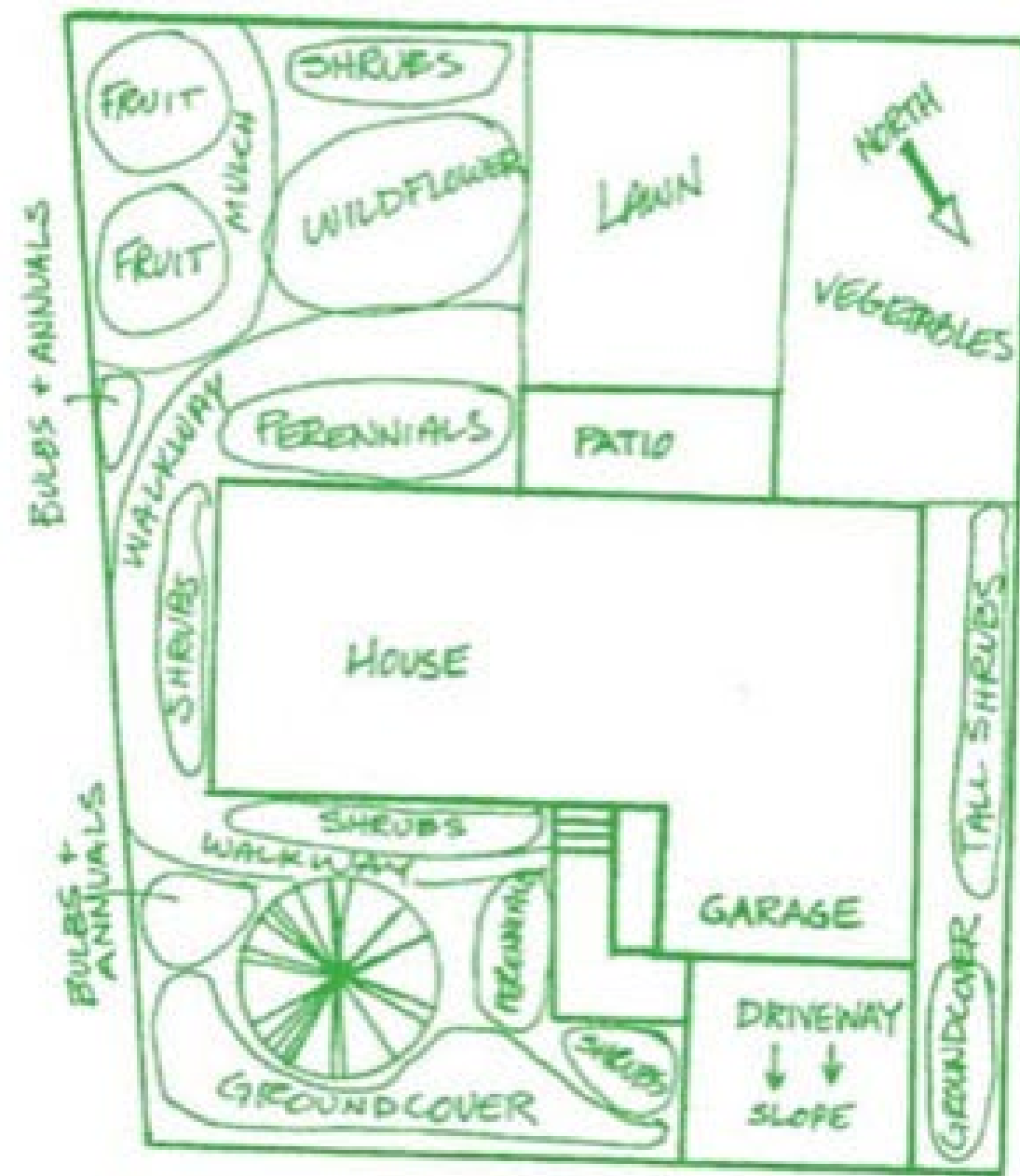
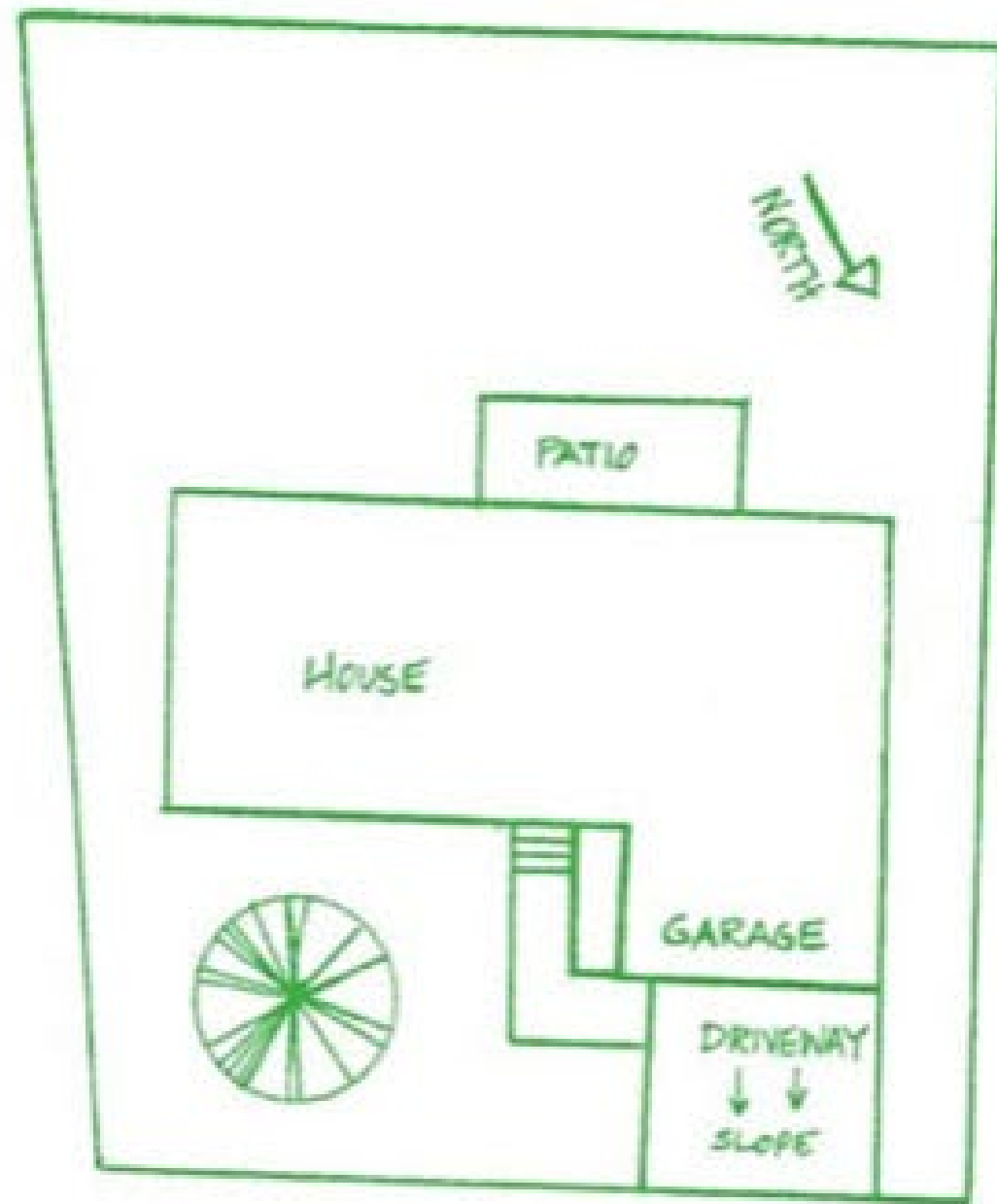
Envision an area of land on your school grounds and design your rainwater harvesting landscape garden.

- You can use one of the sample schools provided or draw your own layout.
- Make sure you label high and low points accordingly
- Draw roof drains, holding tanks, berms and other features of your rainwater system (use symbols and a key)
- Finally add plants from the native list and color code them.

Smart Landscape Design: Lesson 2 Part B



Smart Landscape Design: Lesson 2 Part B



Smart Landscape Design: Lesson 2 Part B

MASTER PLAN DESIGN

